

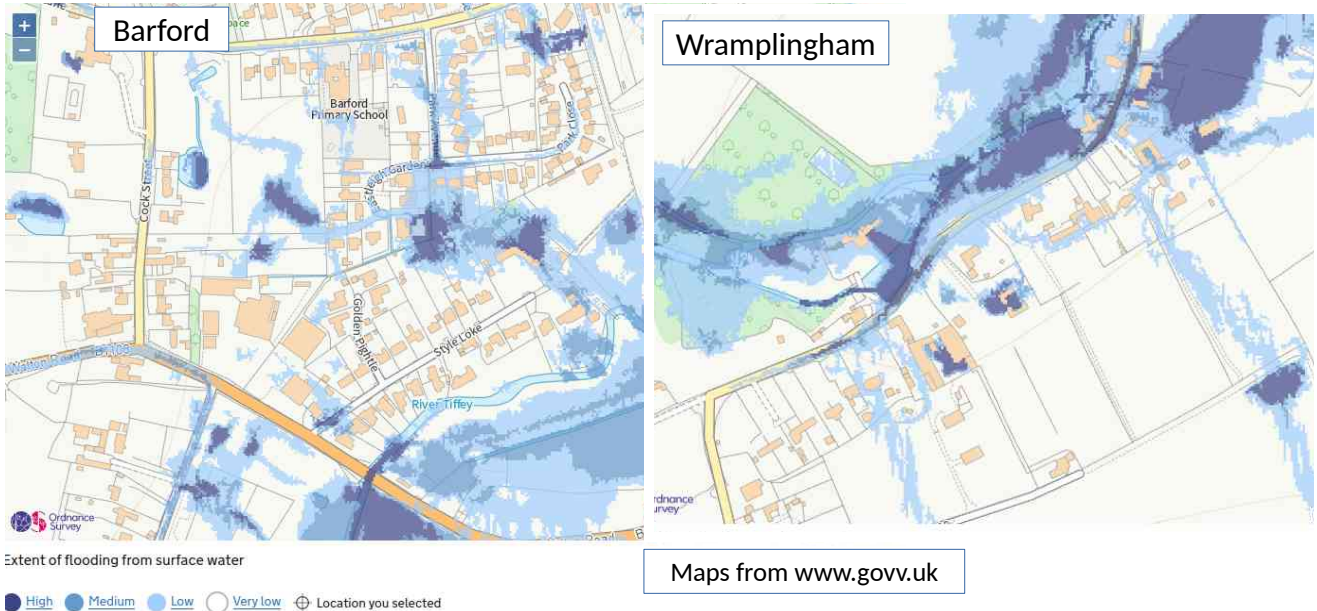


BARFORD AND  
WRAMPLINGHAM  
PARISH COUNCIL

## FLOODING: Barford & Wrampingham 1

### LEARN MORE ABOUT YOUR LOCAL FLOOD RISK

Enter your postcode at <https://www.gov.uk/check-long-term-flood-risk>



### BE PREPARED FOR FLOODING

(see back page)

You can find a household emergency plan templates on the Norfolk Prepared website:

<https://www.norfolkprepared.gov.uk/prepare/>



### IN AN EMERGENCY

**Call 999 if in immediate danger**

There are times (eg heavy widespread rainfall) when the emergency services are stretched to breaking point. The Parish Council, with the support of South Norfolk Council, has a Community Emergency Plan, including a supply of sandbags stored at the Village Hall.

Our Community Emergency Co-ordinator is **Mr Kenny Palmer**

- **01603 759545**
- **07767 767060**

### REPORT YOUR FLOOD

A new single point of contact in Norfolk

**0344 800 8013** to report all floods

### BE A GOOD NEIGHBOUR

**Ditches, Who Owns Them, Responsibilities.** If there is a ditch next to your property, check if you own that boundary. If you do, it is your legal responsibility to keep the ditch clear.

- <https://www.norfolk.gov.uk/rubbish-recycling-and-planning/flood-and-water-management/information-for-homeowners/living-next-to-a-watercourse>

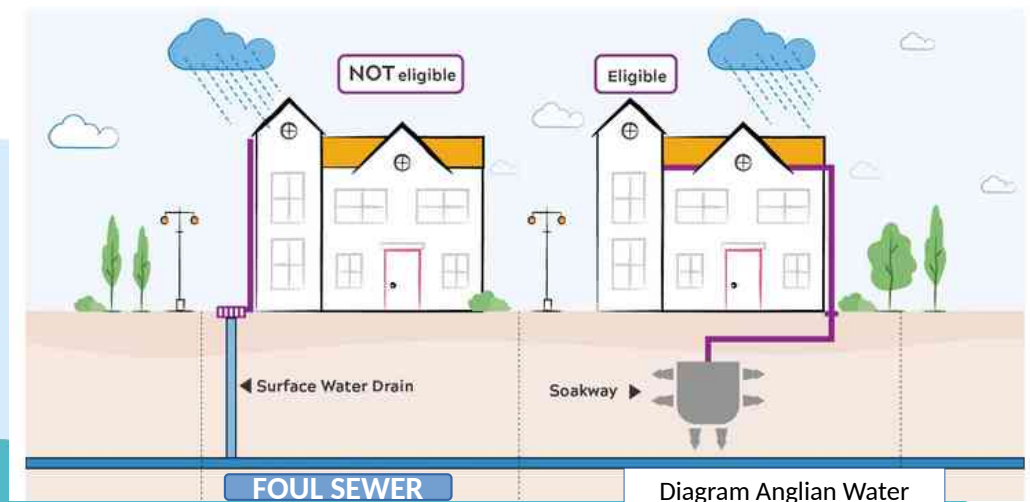
### KNOW WHERE YOUR SURFACE WATER GOES

Keep your surface water (from roofs, patios, drives etc) out of the Anglian Water foul water sewage system See the building regulations

- [https://www.planningportal.co.uk/info/200130/common\\_projects/15/drains\\_and\\_sewers/2](https://www.planningportal.co.uk/info/200130/common_projects/15/drains_and_sewers/2)
- <https://www.gov.uk/government/publications/drainage-and-waste-disposal-approved-document-h>

### GET MONEY BACK

Anglian Water says *"If you can show that none of the surface water from your property drains to the foul sewerage system, either directly or indirectly you can reduce the fixed sewerage charge part of your bill."*



- <https://www.anglianwater.co.uk/account-and-bill/tariffs-and-charges/surface-water-drainage/> "
- For new applications, all accounts that qualify for a surface water reduction will be backdated to the start of the financial year 6 years prior to the account being updated, or to the start of your occupation, whichever is the latest."

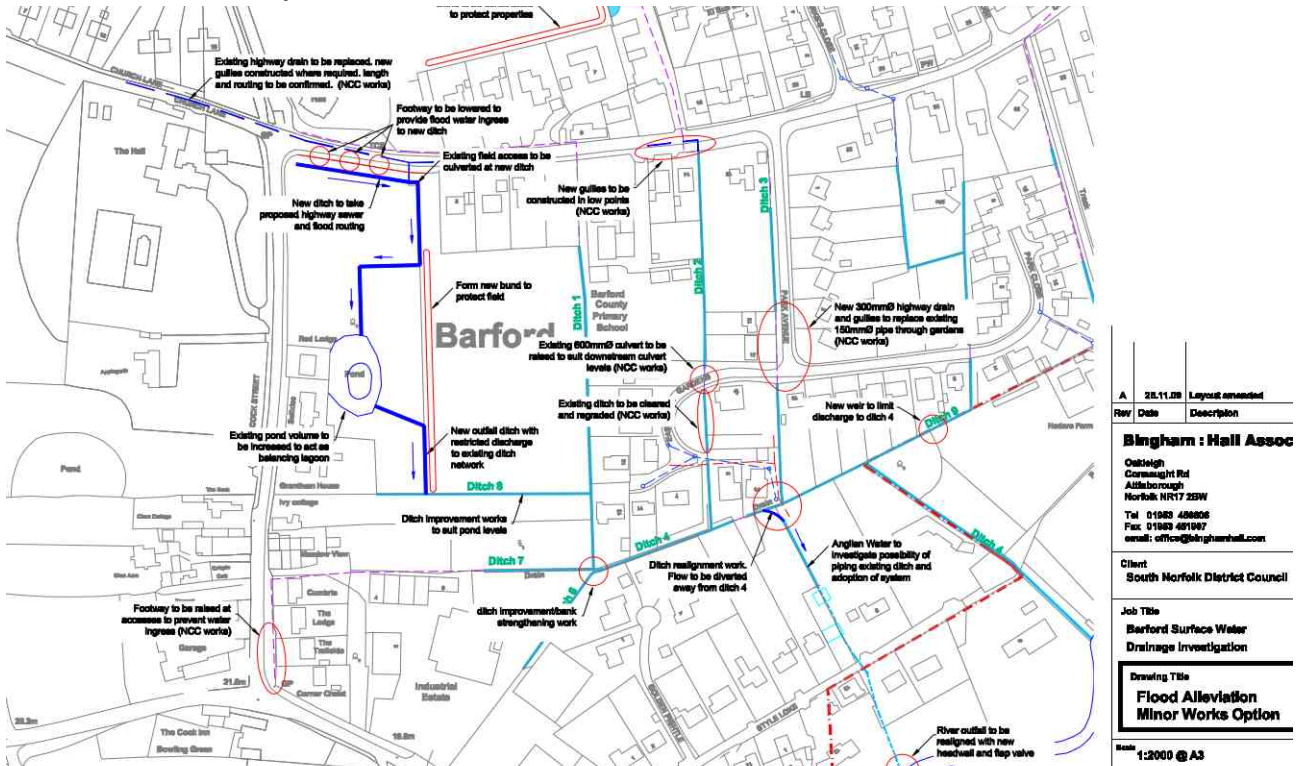


BARFORD AND  
WRAMPLINGHAM  
PARISH COUNCIL

## FLOODING: Barford & Wrampingham 3

**YOUR PARISH COUNCIL** <https://barfordpc.wixsite.com/home>  
**Barford Flood Amelioration Scheme**

These were the plans ... it was installed in 2010 with minor alterations



The Parish Council periodically inspects elements of this and follows up with authorities and land owners to make sure that it is maintained

**TELL US MORE:** [barfordpc@gmail.com](mailto:barfordpc@gmail.com)

Together with Norfolk Strategic Flood Alliance (NSFA) we want to build up a comprehensive picture of where flooding occurs in the two parishes.

Problems may arise from:

- Badly maintained ditches
- Extensive impermeable surfaces (roofs, patios, drives)
- Highways (Run-off, blocked grips and gullies)
- Anglian Water sewerage
- Our rivers and their management
- Being at a low point in the catchment
- Increased frequency of extreme weather events due to Climate Change



The Parish Council wishes to "fully advise agencies of local flood issues" as a Parish Council responsibility within the NSFA. We maintain active contact with NCC Highways, Anglian Water, the Environment Agency, Planning authorities (in respect of upstream development) amongst others.

**NORFOLK  
STRATEGIC  
FLOOD  
ALLIANCE**

**Are you at risk of flooding?**

There are a number of things you can do in advance to prepare for flooding and minimise the impact.

What can you do?

- Check with the Environment Agency to find out if your home/business is at risk of flooding.
- If it is you can register to receive alerts of potential river or coastal flooding on Floodline Warnings Direct via Environment Agency website
- Get to know the flood warning codes and what they mean at
- [www.gov.uk/check-flood-risk](http://www.gov.uk/check-flood-risk)
- Consider whether to buy flood protection equipment to protect your home
- Make sure your mobile is fully charged before possible loss of power
- Put together your Grab Bag and prepare your Household Emergency Plan
- Listen to your local radio for up to date information and weather updates
- 



**Prepare a Plan**

Your household emergency plan should include details of:

- Your key contact numbers and details i.e. house insurance details
- How will you receive flood warnings?
- Where will you put flood defences if you have them and need to put them up?
- Where will you evacuate to if you have to leave your home?
- How will you protect your possessions such as furniture etc?
- How will you protect your valuable and irreplaceable items?
- How will you protect your pets?



**You can find a household emergency plan template at  
<https://www.norfolkprepared.gov.uk/prepare/>  
The Norfolk Prepared website.**